

# SUBMITTAL DATA SHEET



Series Name: Extreme Heat AHU Series  
Model Number: DLCURAH60ABK / DLFUAAH60XAK

## Wall Mounted Heat Pump System

Location:	Approval:
Engineer:	Date:
Submitted to:	Construction:
Submitted by:	Unit #:
Reference:	Drawing #:



## INDOOR SPECIFICATION

Indoor Air Flow (H/M/L) (CFM)	1805.88/1582.35/1358.82/1135.29
Indoor Noise Level (H/M/L) (dBA)	51/45.5/41.5
Dimension (WxDxH)	inch 21 x 24-1/2 x 53
	mm 534 x 622 x 1346
Package (WxDxH)	inch 28 x 26-3/4 x 56-1/2
	mm 710 x 680 x 1435
Net/Gross Weight	lbs 163/193
	kg 73.8/87.5

## OUTDOOR SPECIFICATION

Compressor Type	ROTARY
Refrigerant	R410A
Factory Charge	1300ml
Refrigerant Oil	VG75
Outdoor Air Flow (Max) (CFM)	4500
Outdoor Noise Level (dBA)	63.5
Dimension (WxDxH)	inch 37-1/2 x 16-3/8 x 52-1/2
	mm 952 x 415 x 1333
Package (WxDxH)	inch 43-1/8 x 19-1/2 x 58-1/4
	mm 1095 x 495 x 1480
Net/Gross Weight	lbs 240/272
	kg 108.8/123.2

## EFFICIENCY

Cooling		Heating	
SEER2	15.3	HSPF2-4	9.4
EER2	8.8	COP	3.4

## PERFORMANCE of Cooling

Cooling (Btu/hr)	
Rated Capacity	55000
Min/Max Capacity	14000~56000
Moisture Removal	5.55 L/H (11.71 pint/H)
Standard Operating Range	5°F~122°F (-15°C~50°C)
Rated Cooling Conditions:	Indoor: 80°F DB/67°F WB Outdoor: 95°F DB/75°F WB

## PERFORMANCE of Heating

Heating (Btu/hr)	
1. @ 47°F Rated (Min/Max)	59000(13400~69000)
2. @ 17°F Rated	42000
3. @ 5°F Max: Capacity / COP	48500 / 1.91
Standard Operating Range	-22°F~75°F (-30°C~24°C)
1. Rated Heating Conditions:	Indoor: 70°F DB/60°F WB Outdoor: 47°F DB/43°F WB
2. Rated Heating Conditions:	Indoor: 70°F DB/60°F WB Outdoor: 17°F DB/15°F WB
3. Heating Conditions, Compressor Operating at Max. Frequency	Indoor: 70°F DB/60°F WB Outdoor: 5°F DB/5°F WB

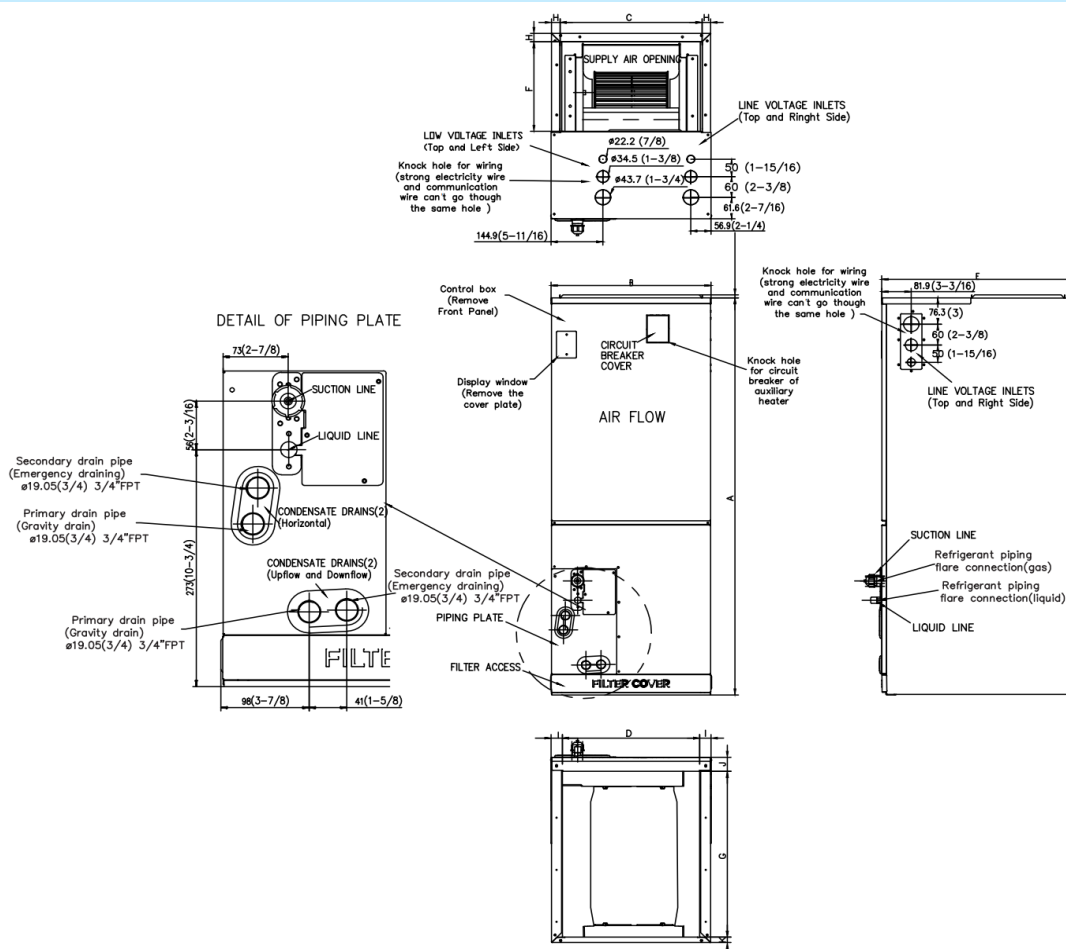
## ELECTRICAL

Power Supply	208/230V, 1Ph, 60Hz
System MCA	40/9
Connection Wiring	AWG 14-2
System MOCP	50/15
Compressor RLA	26.2
Outdoor Fan Motor RLA	1.2
Outdoor Fan Motor W	85
Indoor Fan Motor RLA	7
Indoor Fan Motor W	/
System Power Input @ Cooling (W)	6280(500~6450)
System Power Input @ Heating (W)	5060(750~5890)
Recommended breaker size(A)	40/15
MCA: Min. circuit amps (A)	MOCP: Max. over current protection (A)
RLA: Rated load amps (A)	W: Fan motor rated output (W)

## PIPING

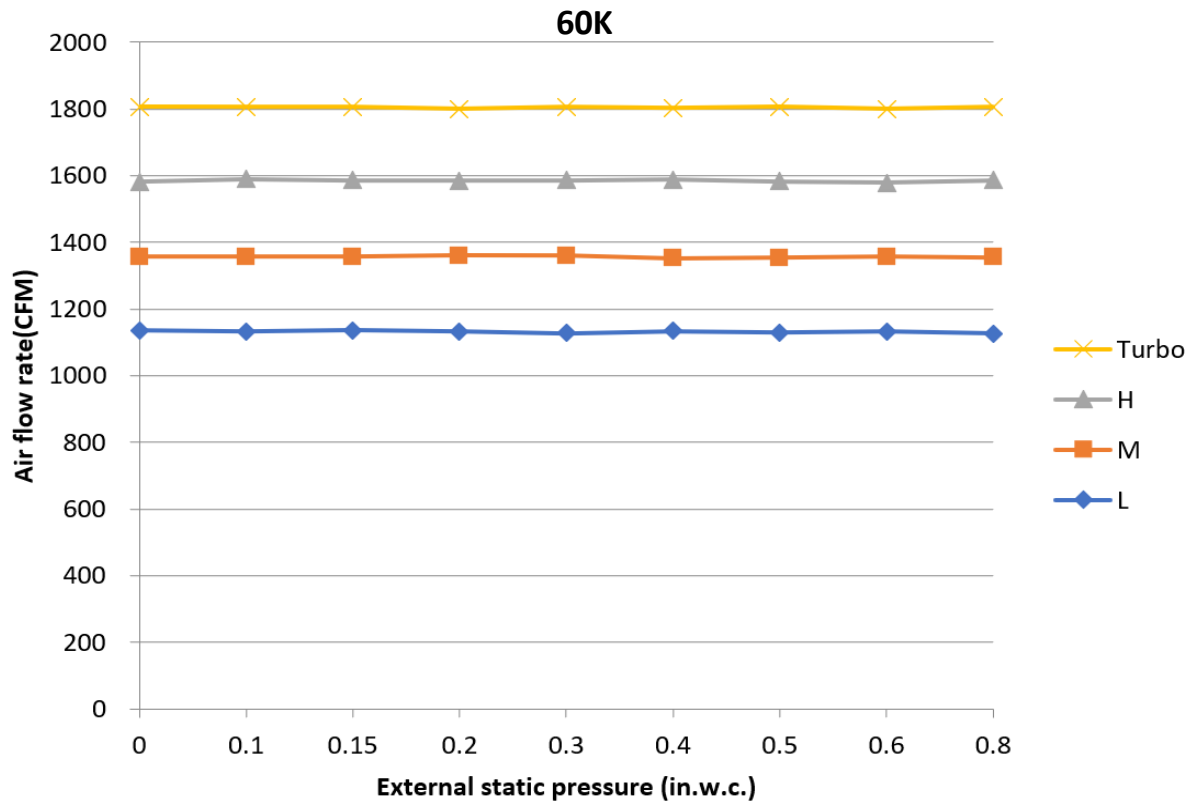
Liquid Size	3/8in (9.52mm)
Gas Size	7/8in (22mm)
Drain Size	5/8in (15.88mm)
Max. Piping Length	213.3ft (65m)
Max. Height Difference	98.42ft (30m)
Max. Pre-charged Length	25ft (7.5m)
Refrigerant Pre-charged Amount	169.31oz (4800g)
Additional Charge of Refrigerant	0.69oz/ft (65g/m)
Connection Method	Flared

# Indoor Unit Dimension

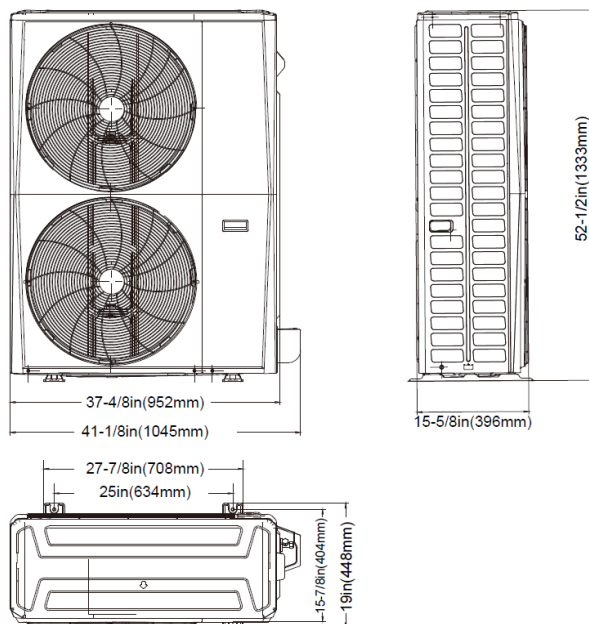


Dimensions	Model	18k/24k		30k/36k		48k/60k	
		inch	mm	inch	mm	inch	mm
A	Model Height	45	1143	49	1245	53	1346
B	Model Width	17-1/2	445	21	534	24-1/2	622
C	Supply Air Opening Width	15-5/8	397	19-1/8	486	22-5/8	575
D	Return Air Opening Width	15-1/8	384	18-5/8	473	22-1/8	562
E	Model Depth	21	534	21	534	21	534
F	Supply Air Opening Depth	10-1/4	260	10-1/4	260	10-1/4	260
G	Return Air Opening Depth	18-3/4	476	18-3/4	476	18-3/4	476
H	Supply Air Opening Clearance	15/16	24	15/16	24	15/16	24
I	Return Air Opening Side Clearance	1-1/4	32	1-1/4	32	1-1/8	28
J	Return Air Opening Front Clearance	1-1/2	38	1-5/8	41	1-5/8	41
K	Return Air Opening Back Clearance	5/8	16	5/8	16	3/4	19

# Fan Performance



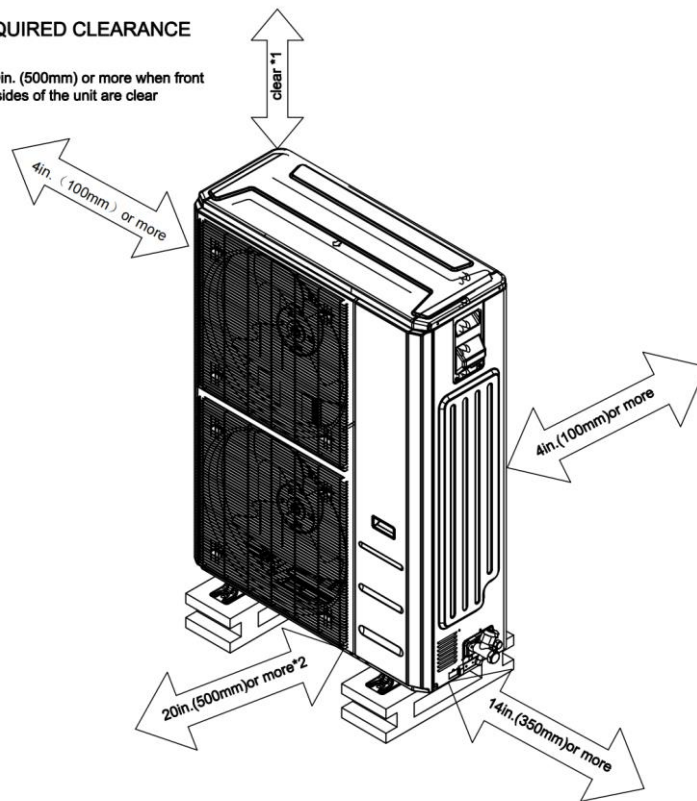
# Outdoor Unit Dimension



## Installation Instruction

### REQUIRED CLEARANCE

\*1 20in. (500mm) or more when front and sides of the unit are clear



\*2 When any 2 sides of left, right and rear of the unit are clear